



Sharp LA Series

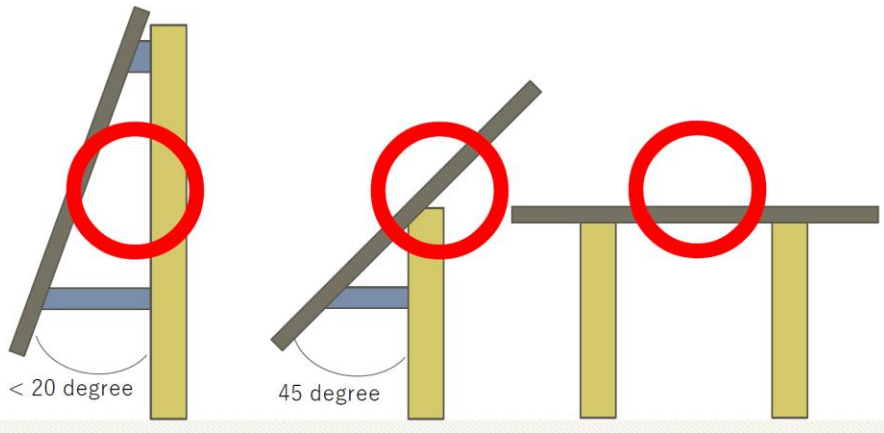
Installation instruction face-up & tilted installation

Sharp NEC Display Solutions Europe GmbH

14-Jun-24

- Condition of tilt angle ...page 3
- Temperature and environment for flat/tilted installation ...page 4
- Shipping content of FACE-UP BRACKETS ...page 5
- Installation instruction of FACE-UP BRACKETS ...page 6-8

- In case that the installation angle is from 0 to 20 degrees versus the vertical direction, usable ambient temperature range of this display is 5°C-35°C.
- In case that the installation angle is 45 degrees versus the vertical direction or flat, usable ambient temperature range of this display is 5°C-30°C.
- Other than the ambient temperature range, there are following conditions when using LA Series face-up or in tilted installation:
 - Only landscape installation
 - Unable to use touch pen
 - Limitation of max. brightness for 65 inch in case of face-up
 - Need special face-up supporting bracket for 75 inch and 86 inch:
 - FACE-UP BRACKET PN-LA752 (100016245)
 - FACE-UP BRACKET PN-LA862 (100016246)
 - Unable to use PIP mode of 4 screens in case of tilted 90 degrees



| Inch | Tilt angle (degree) | Usage condition | | | Installation condition | |
|------|---------------------|-----------------|------------|-------------|------------------------|-----------------|
| | | Temperature | Brightness | Touch pen | Portrait | Special bracket |
| 65 | 0-20 | 5-35°C | - | Available | Yes | No need |
| | 45 | 5-30°C | - | Unavailable | No | No need |
| | 90 | 5-30°C | Max 200cd | Unavailable | No | No need |
| 75" | 0-20 | 5-35°C | - | Available | Yes | No need |
| | 45 | 5-30°C | - | Unavailable | No | Need |
| | 90 | 5-30°C | - | Unavailable | No | Need |
| 86" | 0-20 | 5-35°C | - | Available | Yes | No need |
| | 45 | 5-30°C | - | Unavailable | No | Need |
| | 90 | 5-30°C | - | Unavailable | No | Need |

*1

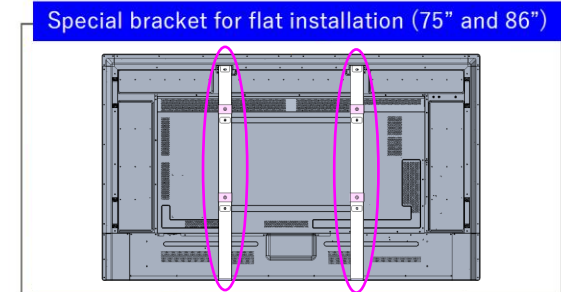
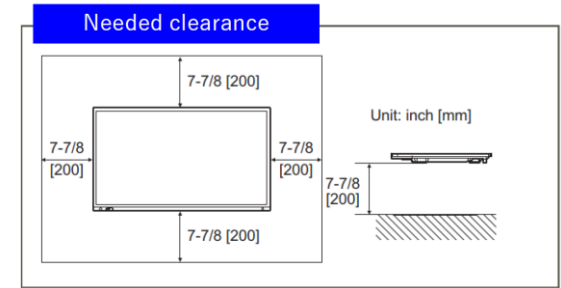
*1

*1

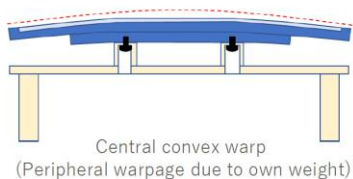
*1: Don't use PIP mode of 4 screen

When using the monitor laying flat on a surface (when the monitor is tilted more than 20 degrees upward from the perpendicular in relation to a level surface), consult an authorized SHARP/NEC dealer because there are some specific mounting conditions. Adhere to the following. Failing to adhere to the following may cause malfunctions.

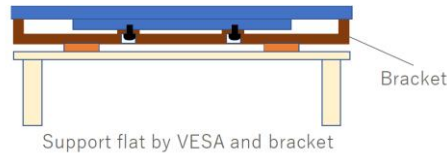
- Set HORIZONTAL INSTALLATION in the MONITOR menu to “FACE UP”. (“FACE UP” mode makes display decrease the max of brightness only for 65”.)
- Use the monitor at the ambient temperature within the range of 41°F (5°C) to 86°F (30°C).
- Provide 7-7/8 inch (200 mm) or more space between the monitor and the floor or other mounting surfaces and surrounding objects to prevent heat from accumulating inside. If it is difficult to provide sufficient space or if the ambient temperature may be outside of the range of 41°F (5°C) to 86°F (30°C), install a fan or take other measures to keep the ambient temperature within the required range.
- In case of flat face-up installation, unable to use touch pen and portrait installation.
- Do not press hard on the LCD panel or otherwise subject it to impacts.
- For 75 and 86 inch, need special face-up bracket for supporting the LCD module.
 - FACE-UP BRACKET PN-LA752 (100016245)
 - FACE-UP BRACKET PN-LA862 (100016246)



Without bracket



With bracket



The following components are supplied with the optional FACE-UP BRACKETS PN-LA752 / PN-LA862:

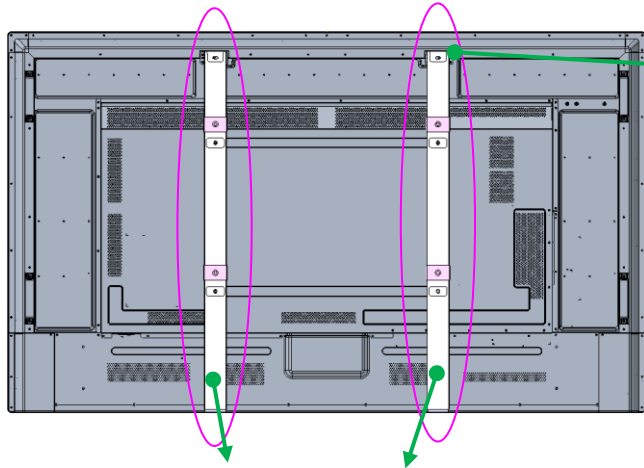
- 2x main pipe incl. metal bracket
- 2x M4 screws

Main pipe and metal bracket



M4 x 8 mm screw PH2

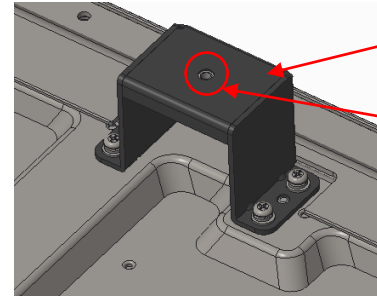
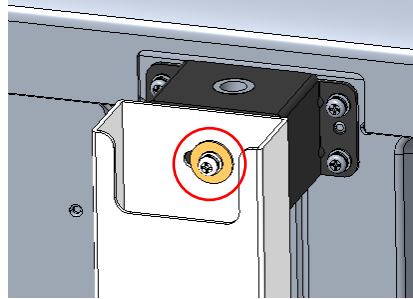




Assembly of pipe and metal bracket

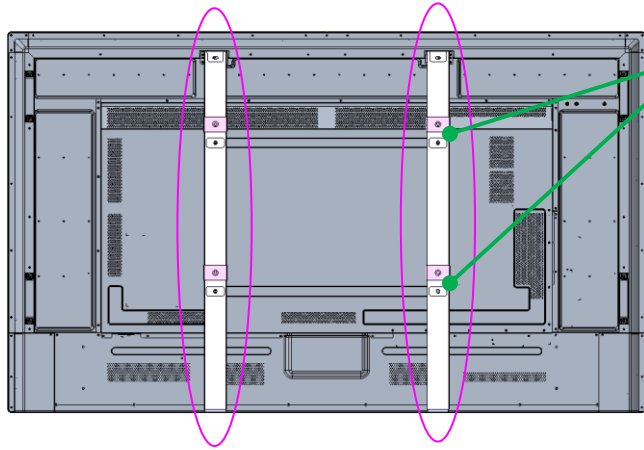


1) Fixing each pipe with one M4 screw at eyebolt bracket of the display

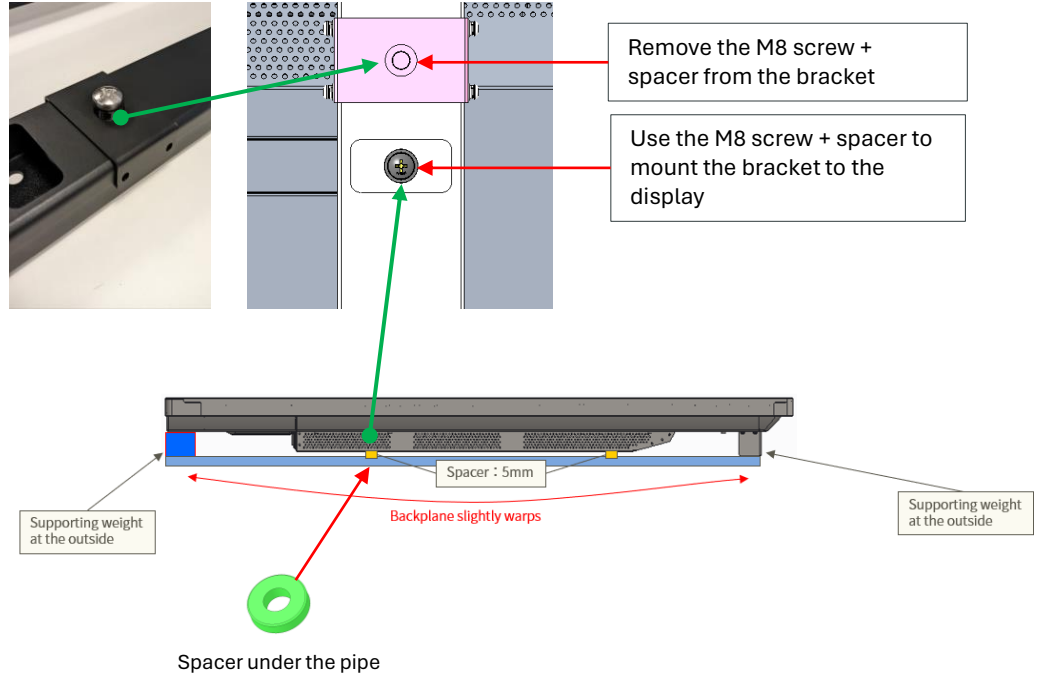


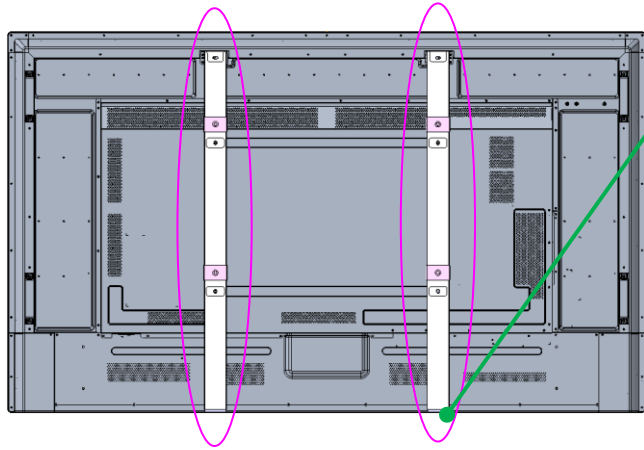
Eyebolt bracket

M4 screw hole

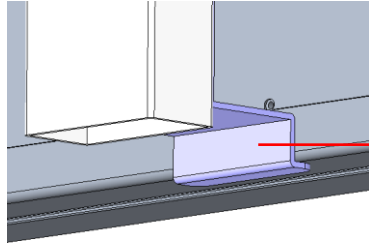


2) Fixing with M8 screw at VESA hole with inserting spacer of 5mm height.





3) Place the bottom end of the pipe to the bottom of the display.



SHARP / NEC

Sharp NEC Display Solutions Europe GmbH