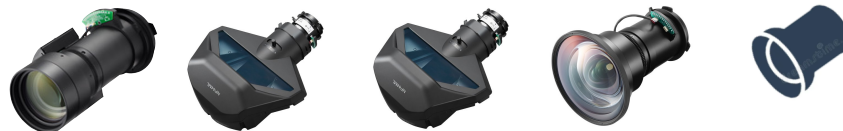


# PROJECTOR LENSES (PA/PV SERIES)

## Specifications



Model	NP12ZL	NP13ZL	NP30ZL	NP40ZL	NP41ZL
Order Code	<a href="#">60003220</a>	<a href="#">60003217</a>	<a href="#">100013349</a>	<a href="#">100014472</a>	<a href="#">100014473</a>
Zoom/Focus	<a href="#">manual</a>	<a href="#">manual</a>	<a href="#">manual</a>	<a href="#">motorised</a>	<a href="#">motorised</a>
Aperture	<a href="#">2.2 - 2.69</a>	<a href="#">1.7 - 2.37</a>	<a href="#">1.9 - 2.1</a>	<a href="#">2.0 - 2.5</a>	<a href="#">1.7 - 2.0</a>
Focal Range [mm]	<a href="#">19.4 - 25.3</a>	<a href="#">24.4 - 48.6</a>	<a href="#">13.2 - 17.2</a>	<a href="#">13.3 - 18.6</a>	<a href="#">21.8 - 49.8</a>
Projection Ratio	<a href="#">1.19 - 1.56</a>	<a href="#">1.50 - 3.02</a>	<a href="#">0.79 - 1.04</a>	<a href="#">0.79 - 1.11</a>	<a href="#">1.3 - 3.02</a>
Zoom Ratio	<a href="#">1.3</a>	<a href="#">2.0</a>	<a href="#">1.3</a>	<a href="#">1.4</a>	<a href="#">2.3</a>
Screen Size [inch]	<a href="#">30 - 500</a>	<a href="#">40 - 500</a>	<a href="#">50 - 500</a>	<a href="#">50 - 500</a>	<a href="#">50 - 500</a>
Projection Distance [m]	<a href="#">0.7 - 16.5</a>	<a href="#">1.2 - 31.9</a>	<a href="#">0.8 - 11.1</a>	<a href="#">20.8 - 12.0</a>	<a href="#">1.4 - 32.6</a>
Shift Area	<a href="#">+10/-50%V / ±20%H</a>	<a href="#">+10/-50%V / ±20%H</a>	<a href="#">+10/-50%V / ±20%H</a>	<a href="#">+10/-50%V / ±20%H</a>	<a href="#">+10/-50%V / ±20%H</a>
Weight [kg]	<a href="#">1.2</a>	<a href="#">0.84</a>	<a href="#">1.14</a>	<a href="#">1.63</a>	<a href="#">1.75</a>
Compatible Projectors	<a href="#">PA3, PA4, PV series</a>	<a href="#">PA3, PA4, PV series</a>	<a href="#">PA3, PV series</a>	<a href="#">PA3, PA4, PV series</a>	<a href="#">PA3, PA4, PV series</a>



Model	NP43ZL	NP44ML	NP44ML-PA4	NP50ZL	NP51ZL *
Order Code	<a href="#">100014645</a>	<a href="#">100015167</a>	<a href="#">100015549</a>	<a href="#">100015855</a>	<a href="#">100016132</a>
Zoom/Focus	<a href="#">motorised</a>	<a href="#">motorised focus</a>	<a href="#">motorised focus</a>	<a href="#">motorised</a>	<a href="#">motorised</a>
Aperture	<a href="#">2.2 - 2.6</a>	<a href="#">2.0</a>	<a href="#">2.0</a>	<a href="#">1.9 - 2.1</a>	<a href="#">1.85 - 2.20</a>
Focal Range [mm]	<a href="#">49.7 - 99.8</a>	<a href="#">6.27</a>	<a href="#">6.27</a>	<a href="#">10.2 - 12.8</a>	<a href="#">12.0 - 14.6</a>
Projection Ratio	<a href="#">2.99 - 5.93</a>	<a href="#">0.32</a>	<a href="#">0.32</a>	<a href="#">0.6 - 0.75</a>	<a href="#">0.53 - 0.65</a>
Zoom Ratio	<a href="#">2.0</a>	<a href="#">-</a>	<a href="#">-</a>	<a href="#">1.25</a>	<a href="#">1.23</a>
Screen Size [inch]	<a href="#">50 - 500</a>	<a href="#">100 - 400</a>	<a href="#">100 - 400</a>	<a href="#">50 - 500</a>	<a href="#">60 - 500</a>
Projection Distance [m]	<a href="#">3.3 - 63.9</a>	<a href="#">0.08 - 2.28</a>	<a href="#">0.08 - 2.28</a>	<a href="#">0.65 - 8.08</a>	<a href="#">0.68 - 7.00</a>
Shift Area	<a href="#">+10/-50%V / ±20%H</a>	<a href="#">-</a>	<a href="#">-</a>	<a href="#">0.5V / 0.2H</a>	<a href="#">±50%V / ±25%H</a>
Weight [kg]	<a href="#">1.77</a>	<a href="#">3.2</a>	<a href="#">3.2</a>	<a href="#">2.5</a>	<a href="#">tbd</a>
Compatible Projectors	<a href="#">PA3, PA4, PV series</a>	<a href="#">PA3, PV series</a>	<a href="#">PA4 series</a>	<a href="#">PA4, PV series</a>	<a href="#">PA5 series</a>

\* available in 2024. Preliminary data, subject to change

available in 2024



available in 2024



Model	NP52ZL *	NP53ZL	NP54ZL	NP55ZL	NP56ZL *
Order Code	100016133	100016134	100016135	100016136	100016137
Zoom/Focus	motorised	motorised	motorised	motorised	motorised
Aperture	1.84 - 2.25	1.8 - 2.24	1.8 - 2.24	1.84 - 2.58	1.84 - 2.40
Focal Range [mm]	14.4 - 19.1	19.0 - 27.6	27.7 - 44.3	43.8 - 86.0	86.0 - 165.0
Projection Ratio	0.65 - 0.87	0.86 - 1.25	1.24 - 2.01	1.98 - 3.96	3.92 - 7.50
Zoom Ratio	1.34	1.45	1.62	1.99	1.90
Screen Size [inch]	60 - 500	60 - 500	60 - 500	60 - 500	60 - 500
Projection Distance [m]	0.84 - 9.37	1.11 - 13.46	1.60 - 21.65	2.55 - 42.65	7.76 - 80.78
Shift Area	±55%V / ±20%H	±65%V / ±25%H	±65%V / ±25%H	±65%V / ±25%H	±65%V / ±25%H
Weight [kg]	tbd	5.1	4.1	5.0	tbd
Compatible Projectors	PA5 series	PA5 series	PA5 series	PA5 series	PA5 series

## Screen Size and Distance

Screen Size	NP12ZL	NP13ZL	NP30ZL	NP40ZL	NP41ZL	NP43ZL	NP44ML	NP44ML-PA4
80"	2.0 ~ 2.6	2.5 ~ 5.1	1.4 ~ 1.7	1.4 ~ 1.9	2.2 ~ 5.2	5.1 ~ 10.3	-	-
100"	2.5 ~ 3.3	3.2 ~ 6.3	1.7 ~ 2.24	1.7 ~ 2.4	2.8 ~ 6.6	6.5 ~ 13.2	0.08	0.08
120"	3.0 ~ 3.9	3.8 ~ 7.6	2.1 ~ 2.6	2.1 ~ 1.9	3.4 ~ 7.9	7.8 ~ 15.5	0.22	0.22
150"	3.8 ~ 4.9	4.8 ~ 9.5	2.5 ~ 3.3	2.6 ~ 3.6	4.2 ~ 9.8	9.7 ~ 19.3	0.49	0.49
200"	5.1 ~ 6.6	6.4 ~ 12.7	3.4 ~ 4.4	3.4 ~ 4.7	5.6 ~ 12.9	12.9 ~ 25.7	0.81	0.81
240"	6.1 ~ 7.9	7.6 ~ 15.3	4.1 ~ 5.3	4.1 ~ 5.7	6.8 ~ 15.7	15.5 ~ 31.0	1.11	1.11
300"	7.6 ~ 9.9	9.6 ~ 19.1	5.1 ~ 6.6	5.1 ~ 7.1	8.4 ~ 19.5	19.3 ~ 38.3	1.55	1.55
400"	10.2 ~ 13.2	12.8 ~ 25.5	6.8 ~ 8.8	6.8 ~ 9.5	11.2 ~ 26.0	25.7 ~ 50.1	2.28	2.28
500"	12.7 ~ 16.5	16.0 ~ 31.9	8.5 ~ 11.1	8.5 ~ 12.0	14.0 ~ 32.6	32.2 ~ 63.9	-	-

Screen Size	NP50ZL	NP51ZL *	NP52ZL *	NP53ZL	NP54ZL	NP55ZL	NP56ZL *
80"	1.03 ~ 1.29	0.91 ~ 1.12	1.12 ~ 1.50	1.48 ~ 2.15	2.14 ~ 3.46	3.41 ~ 6.82	6.75 ~ 12.92
100"	1.29 ~ 1.62	1.14 ~ 1.40	1.40 ~ 1.87	1.85 ~ 2.69	2.67 ~ 4.33	4.26 ~ 8.53	8.44 ~ 16.16
120"	1.55 ~ 1.94	1.37 ~ 1.68	1.68 ~ 2.25	2.22 ~ 3.23	3.21 ~ 5.20	5.12 ~ 10.24	10.13 ~ 19.39
150"	1.94 ~ 2.42	1.71 ~ 2.10	2.10 ~ 2.81	2.78 ~ 4.04	4.01 ~ 6.49	6.40 ~ 12.79	12.67 ~ 24.23
200"	2.58 ~ 3.23	2.28 ~ 2.80	2.80 ~ 3.75	3.70 ~ 5.39	5.34 ~ 8.66	8.53 ~ 17.06	16.89 ~ 32.31
240"	3.10 ~ 3.88	2.74 ~ 3.36	3.36 ~ 4.50	4.45 ~ 6.46	6.41 ~ 10.39	10.23 ~ 20.47	20.26 ~ 38.77
300"	3.88 ~ 4.85	3.42 ~ 4.20	4.20 ~ 5.62	5.56 ~ 8.08	8.01 ~ 12.99	12.79 ~ 25.59	25.33 ~ 48.47
400"	5.17 ~ 6.46	4.57 ~ 5.60	5.60 ~ 7.50	7.41 ~ 10.77	10.68 ~ 17.32	17.06 ~ 34.12	33.77 ~ 64.62
500"	6.46 ~ 8.08	5.71 ~ 7.00	7.00 ~ 9.37	9.26 ~ 13.46	13.35 ~ 21.65	21.32 ~ 42.65	42.22 ~ 80.78

\* available in 2024 Preliminary data, subject to change.

This document is © 2023 Sharp NEC Display Solutions Europe GmbH.

All rights reserved in favour of their respective owners. All hardware and software names are brand names and/or registered trademarks of the respective manufacturers. All specifications are subject to change without notice. Errors and omissions are excepted. 08/2023